

4

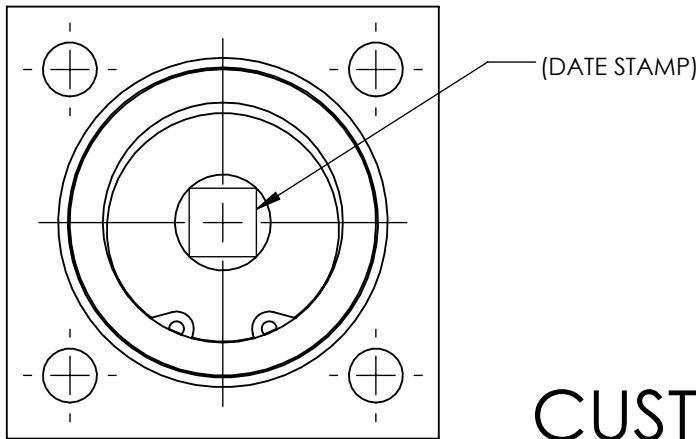
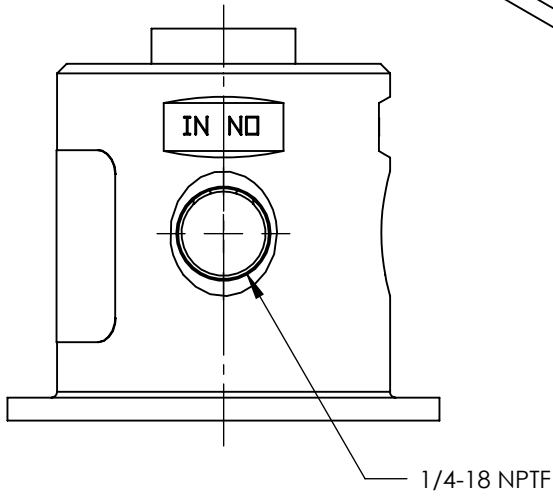
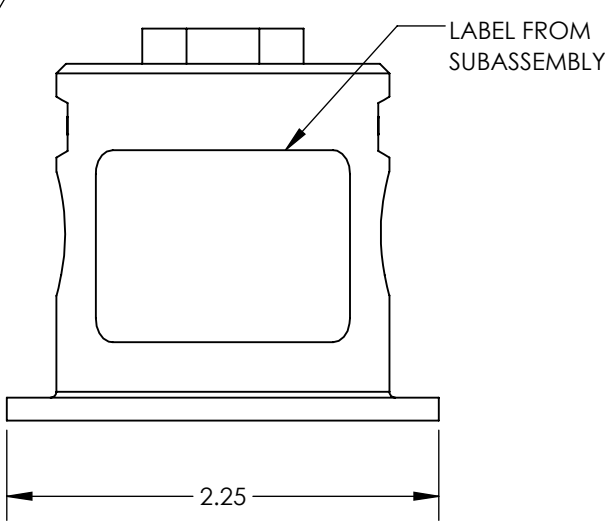
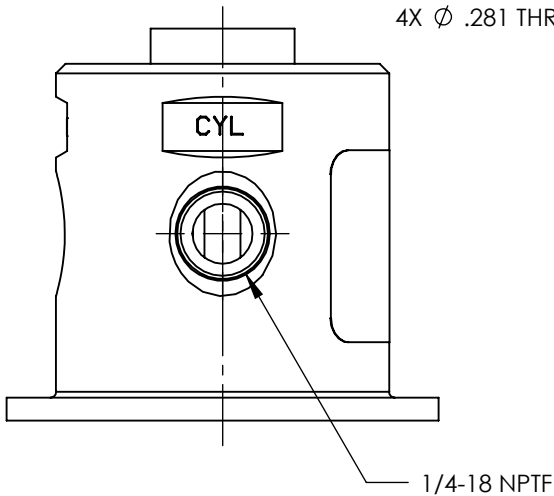
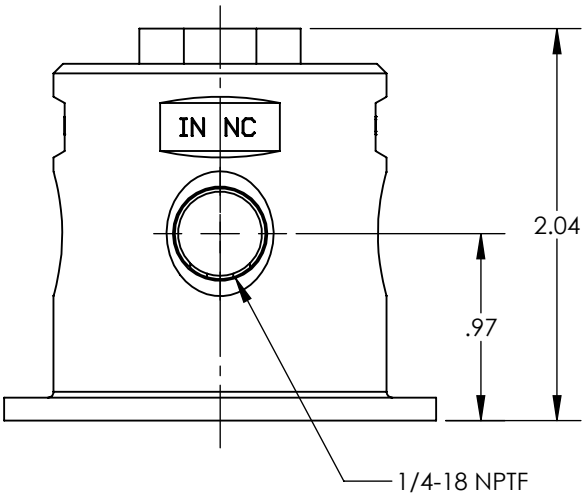
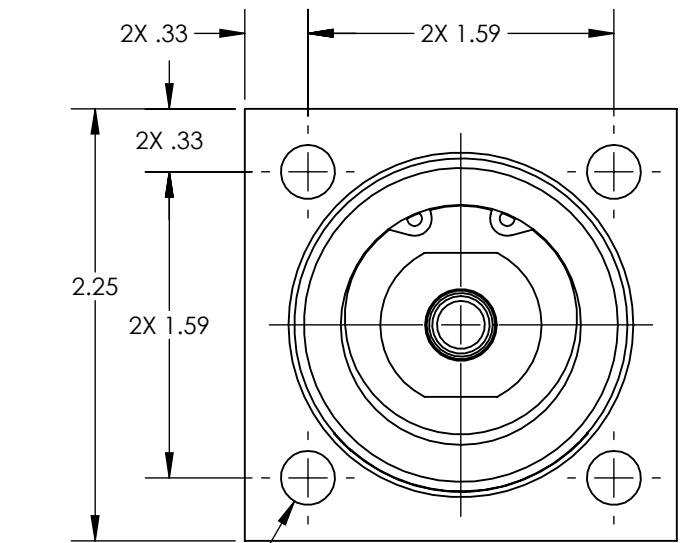
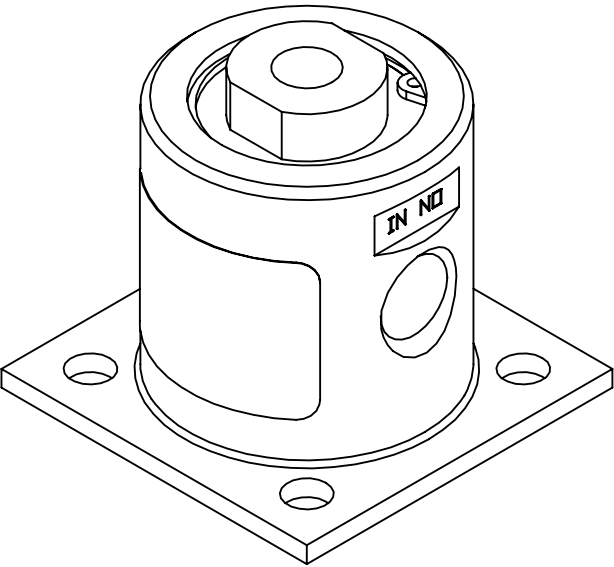
3

2

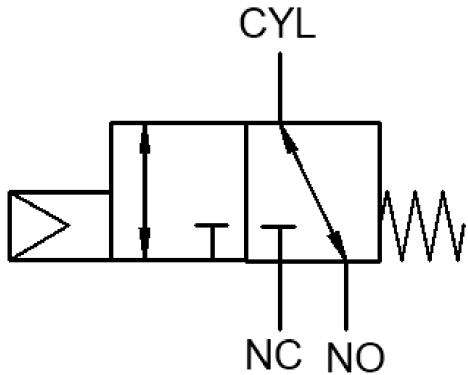
1

- NOTES:
1. APPLICABLE STANDARDS/SPECIFICATIONS:
ASME Y14.5M-1994, DIMENSIONING AND TOLERANCING
ASME Y14.38-1999, ABBREVIATIONS
 2. COMPONENT OR ITEM TO BE COMPLIANT WITH THE MOST
CURRENT REVISION OF THE RoHS / Wee DIRECTIVE FOR
THE REDUCTION OF HAZARDOUS SUBSTANCES AND MATERIALS.
 3. ALL DIMENSIONS ARE FOR REFERENCE ONLY.
 4. ITEM INDIVIDUALLY SEALED IN LABELED BAG
 5. ITEM IS RETAIL PACKED D2510305

REV	DATE	EC #	ZONE	DESCRIPTION	DRAWN	CKD
A	2020-09-25			ORIGINATED	NR	JMA



FUNCTION	3/2 AIR PILOT DIAPHRAGM VALVE
MECHANICAL MATERIALS	ANDZ ALUM., BRASS, SS
SEALS	LOW TEMP NITRILE, LOW COMP. SET POLYURETHANE
FASTENERS	N/A
MTG STYLE	FLANGE
ASSY LUBRICATION	N/A
FLOW	2.0 Cv
TEMP	-40 TO 180°F
FILTRATION	40 MICRON REQUIRED
SYSTEM LUBRICATION REQ'D	N/A
PRESSURE RANGE	MIN: 0 psi MAX: 150 psi PILOT:
LEAK	N/A
ELECTRICAL VOLTAGE	N/A
CURRENT	N/A



CUSTOMER PRINT

NOTE: PART MUST BE CLEAN AND BURR FREE
MFG TOLERANCES UNLESS OTHERWISE NOTED:
ALL UNITS ARE INCHES
(2) DECIMAL PLACES: ±.01
(3) DECIMAL PLACES: ±.005
ANGLES: ±.5°
BREAK ALL EDGES .005/.015 X 45°
MACHINED SURFACES TO BE 63 RMS
CRITICAL CHARACTERISTIC - CONTROL
PLAN REQUIRED

CONFIDENTIAL: THIS DRAWING OR ANY PART THEREOF IS PROPRIETARY AND MAY NOT BE REPRODUCED OR COPIED WITHOUT WRITTEN CONSENT OF AIRMAN PRODUCTS

DRAWN BY	NR	DESCRIPTION
DRAWN DATE	2020-09-25	DIAPHRAGM VALVE ASSY
DRAWING SIZE	B	
MATERIAL	SEE NOTES	PART NUMBER
SCALE	1:1	
SHEET #	1 OF 1	B2400-B84