

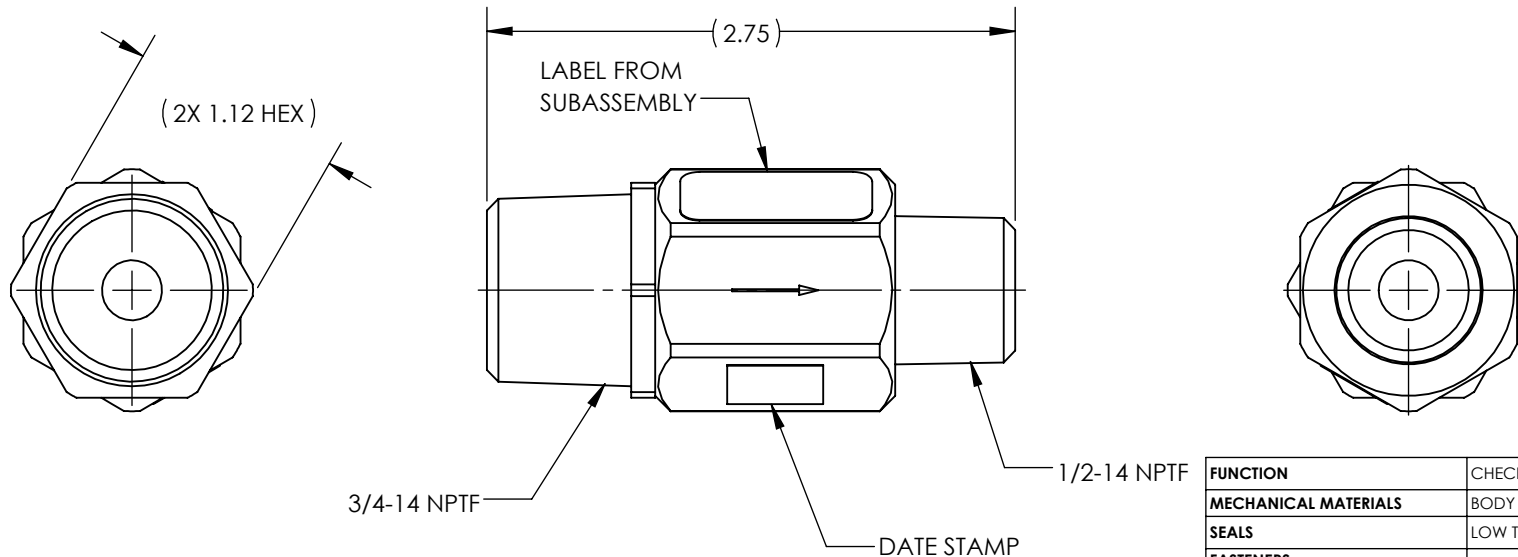
2

1

NOTES:

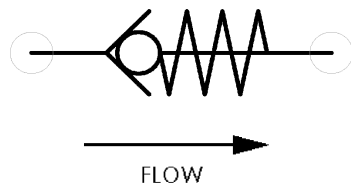
1. APPLICABLE STANDARDS/SPECIFICATIONS:
ASME Y14.5M-1994, DIMENSIONING AND TOLERANCING
ASME Y14.38-1999, ABBREVIATIONS
2. COMPONENT OR ITEM TO BE COMPLIANT WITH THE MOST
CURRENT REVISION OF THE RoHS / Wee DIRECTIVE FOR
THE REDUCTION OF HAZARDOUS SUBSTANCES AND MATERIALS.
3. ALL DIMENSIONS ARE FOR REFERENCE ONLY.
4. ENGINEERING REFERENCE: 5 PSI CRACKING PRESSURE
5. ITEM INDIVIDUALLY SEALED IN LABELED BAG.
6. ITEM IS RETAIL PACKED B2400-767.

REV	DATE	EC #	ZONE	DESCRIPTION	DRAWN	CKD
A	2020-09-28			ORIGINATED	NR	JMA



FUNCTION	CHECK VALVE
MECHANICAL MATERIALS	BODY AISI STEEL
SEALS	LOW TEMP. BUNA-N
FASTENERS	-
MTG STYLE	INLINE
ASSY LUBRICATION	HEAVY TRANSPORT SILICONE
FLOW	-
TEMP	-40 TO 180°F
FILTRATION	-
SYSTEM LUBRICATION REQ'D	N/A
PRESSURE RANGE	MIN: MAX: 150 psi
LEAK	-
ELECTRICAL VOLTAGE	N/A
CURRENT	N/A

CUSTOMER PRINT



NOTE: PART MUST BE CLEAN AND BURR FREE
MFG TOLERANCES UNLESS OTHERWISE NOTED:

ALL UNITS ARE INCHES
(2) DECIMAL PLACES: ± 0.01
(3) DECIMAL PLACES: ± 0.005
ANGLES: $\pm 5^\circ$
BREAK ALL EDGES .005/.015 X 45°
MACHINED SURFACES TO BE 63 RMS
CRITICAL CHARACTERISTIC - CONTROL
PLAN REQUIRED

Third Angle
Projection

CONFIDENTIAL: THIS DRAWING OR
ANY PART THEREOF IS PROPRIETARY
AND MAY NOT BE REPRODUCED OR
COPIED WITHOUT WRITTEN CONSENT
OF AIRMAN PRODUCTS

DRAWN BY	NR	DESCRIPTION
DATE DRAWN	2020-09-28	CHECK VALVE ASSEMBLY
DRAWING SIZE	A	
MATERIAL	SEE NOTES	PART NUMBER
SCALE	1:1	
SHEET #	1 OF 1	B2400-B85

2

1