

4

3

2

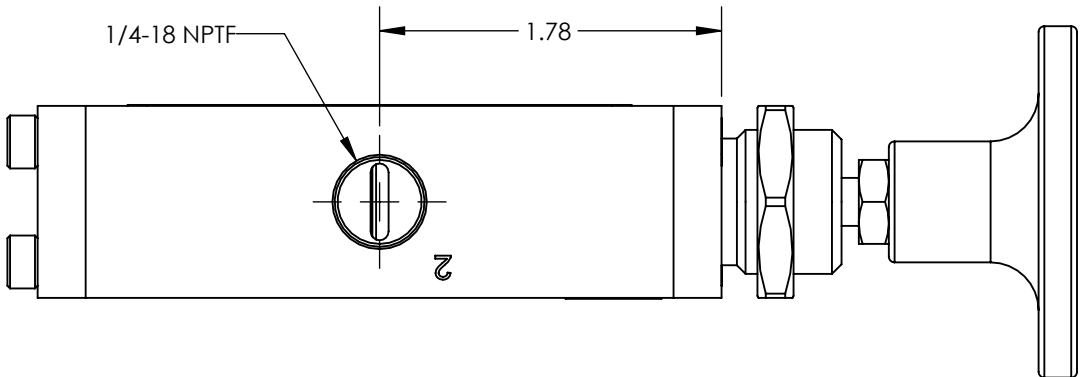
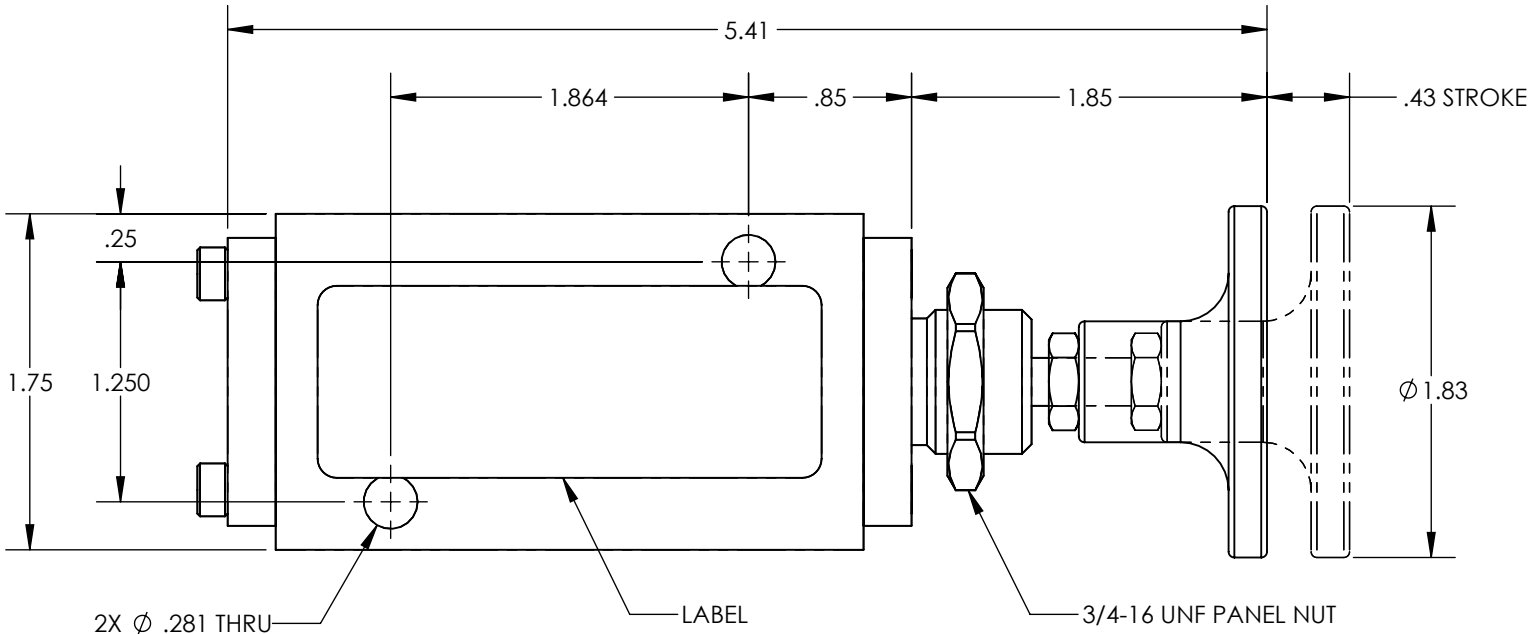
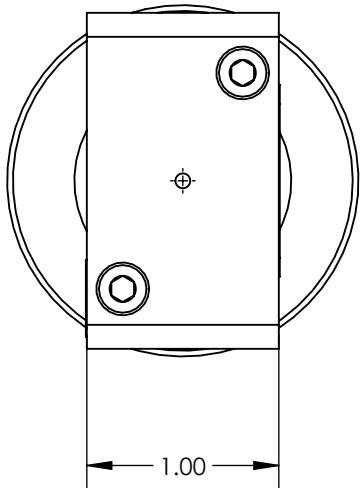
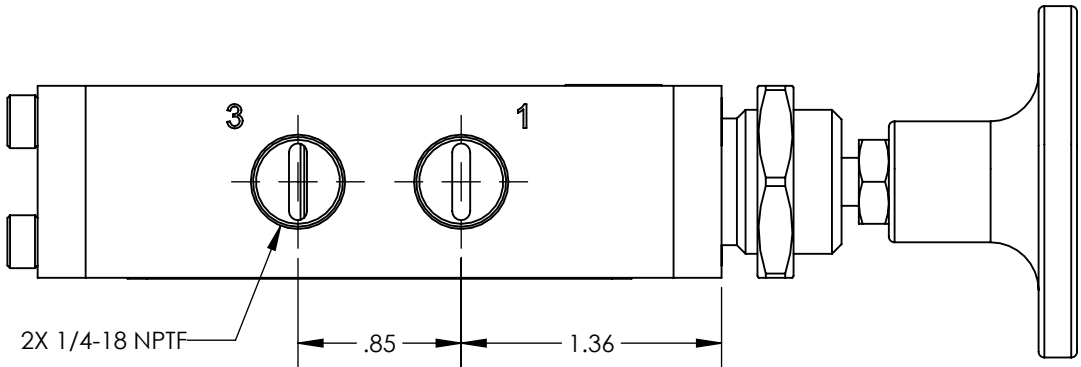
1

NOTES:

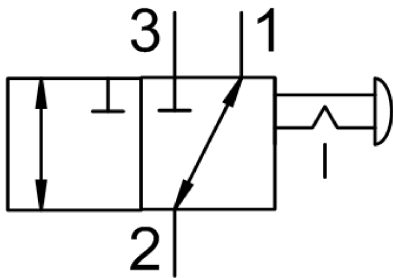
1. APPLICABLE STANDARDS/SPECIFICATIONS:  
ASME Y14.5M-1994, DIMENSIONING AND TOLERANCING  
ASME Y14.38-1999, ABBREVIATIONS
2. COMPONENT OR ITEM TO BE COMPLIANT WITH THE MOST  
CURRENT REVISION OF THE RoHS / Wee DIRECTIVE FOR  
THE REDUCTION OF HAZARDOUS SUBSTANCES AND MATERIALS.  
ALL DIMENSIONS ARE FOR REFERENCE ONLY.
3. 

4. TABLE PRINT: USE CHART ASSOCIATED WITH AIRMAN ASSEMBLY  
PART NUMBER. SUFFIXES (EXAMPLES -CLR AND -BLK) ATTACHED  
TO THE END OF THE AIRMAN PART NUMBER WILL INDICATE THE  
ANODIZATION COLOR (IF APPLICABLE)
5. ITEM INDIVIDUALLY SEALED IN BAG

REV	DATE	EC #	ZONE	DESCRIPTION	DRAWN	CKD
A	2019-11-22			ORIGINATED	NR	CED
B	2020-09-08	2222		ADDED BAG	NR	



FUNCTION	3/2 PUSH/PULL WITH DETENT
MECHANICAL MATERIALS	ALUMINUM BODY & END CAP
SEALS	LOW TEMP. NITRILE, LOW COMP. SET POLYURETHANE
FASTENERS	STAINLESS STEEL
MTG STYLE	PANEL OR BODY SIDE
ASSY LUBRICATION	HEAVY TRANSPORT SILICONE
FLOW	1.5 Cv
TEMP	-40 TO 180°F
FILTRATION	40 MICRON
SYSTEM LUBRICATION REQ'D	N/A
PRESSURE RANGE	MIN: 0 psi MAX: 150 psi PILOT: N/A
LEAK	N/A
ELECTRICAL VOLTAGE	N/A
CURRENT	N/A



AIRman PART NUMBER CHART	
AIRman PART NUMBER	ANODIZATION COLOR
V251S20021	NON-ANODIZED
V251S20021-BLK	BLACK-ANODIZED
V251S20021-CLR	CLEAR-ANODIZED

NOTE: PART MUST BE CLEAN AND BURR FREE  
MFG TOLERANCES UNLESS OTHERWISE NOTED:  
ALL UNITS ARE INCHES  
(2) DECIMAL PLACES: ±.01  
(3) DECIMAL PLACES: ±.005  
ANGLES: ±.5°  
BREAK ALL EDGES .005/.015 X 45°  
MACHINED SURFACES TO BE 63 RMS  
CRITICAL CHARACTERISTIC - CONTROL  
PLAN REQUIRED

CUSTOMER PRINT

CONFIDENTIAL: THIS DRAWING OR  
ANY PART THEREOF IS PROPRIETARY  
AND MAY NOT BE REPRODUCED OR  
COPIED WITHOUT WRITTEN CONSENT  
OF AIRMAN PRODUCTS

DRAWN BY	NR	DESCRIPTION
DRAWN DATE	2019-11-22	VALVE, .25 NPT, 3-2, PPDET-VC
DRAWING SIZE	B	
MATERIAL	SEE NOTES	PART NUMBER
SCALE	1:1	V251S20021
SHEET #	1 OF 1	