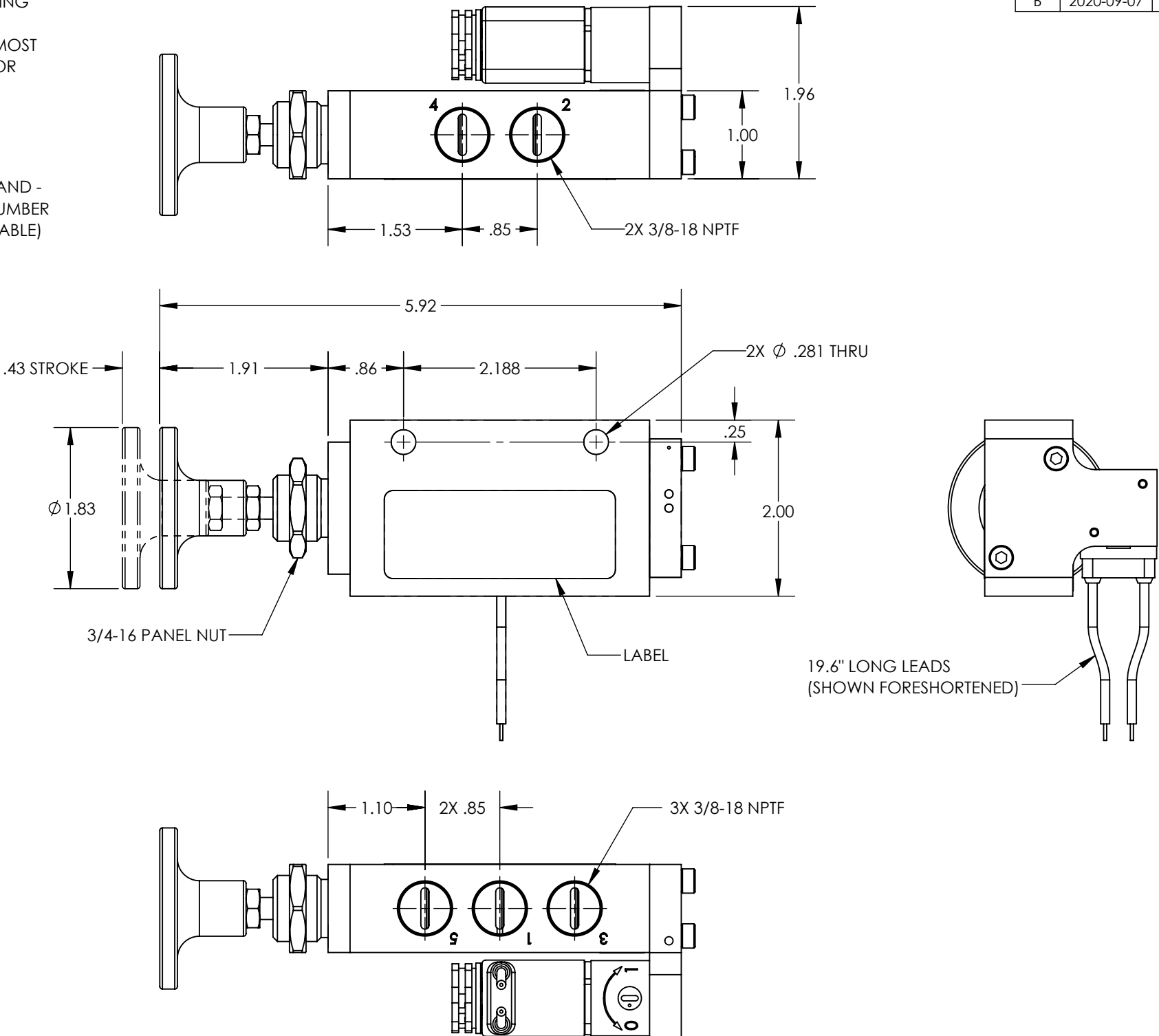
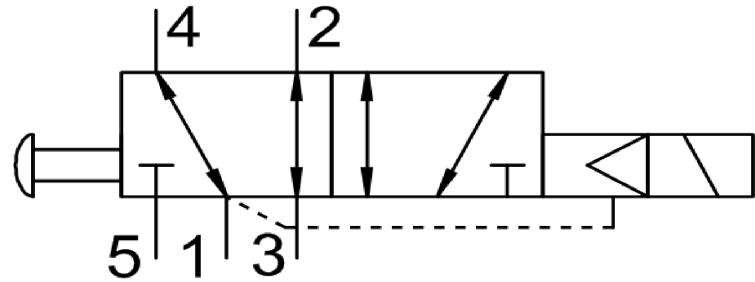


- NOTES:
1. APPLICABLE STANDARDS/SPECIFICATIONS:  
ASME Y14.5M-1994, DIMENSIONING AND TOLERANCING  
ASME Y14.38-1999, ABBREVIATIONS
  2. COMPONENT OR ITEM TO BE COMPLIANT WITH THE MOST  
CURRENT REVISION OF THE RoHS / Wee DIRECTIVE FOR  
THE REDUCTION OF HAZARDOUS SUBSTANCES AND  
MATERIALS.
  3. ALL DIMENSIONS ARE FOR REFERENCE ONLY.
  4. TABLE PRINT: USE CHART ASSOCIATED WITH AIRMAN  
ASSEMBLY PART NUMBER. SUFFIXES (EXAMPLES -CLR AND -  
BLK) ATTACHED TO THE END OF THE AIRMAN PART NUMBER  
WILL INDICATE THE ANODIZATION COLOR (IF APPLICABLE)
  5. ITEM INDIVIDUALLY SEALED IN BAG

REV	DATE	EC #	ZONE	DESCRIPTION	DRAWN	CKD
A	2019-11-07			ORIGINATED	NR	CED
B	2020-09-07	2222		ADDED BAG	NR	




FUNCTION	5/2 PUSH/PULL, SIDE MOUNT, SOL. RESET.
MECHANICAL MATERIALS	ALUMINUM BODY & END CAPS
SEALS	LOW TEMP. NITRILE, LOW COMP. SET POLYURETHANE
FASTENERS	STAINLESS STEEL
MTG STYLE	PANEL OR BODY SIDE
ASSY LUBRICATION	HEAVY TRANSPORT SILICONE
FLOW	2.2 Cv
TEMP	-40 TO 180°F
FILTRATION	40 MICRON
SYSTEM LUBRICATION REQ'D	N/A
PRESSURE RANGE	MIN: 55      MAX: 150 psi
LEAK	N/A
ELECTRICAL VOLTAGE	N/A
CURRENT	N/A

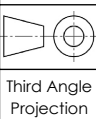


AIRman PART NUMBER CHART	
AIRman PART NUMBER	ANODIZATION COLOR
V380110114-DAL	NON-ANODIZED
V380110114-DAL-BLK	BLACK-ANODIZED
V380110114-DAL-CLR	CLEAR-ANODIZED

NOTE: PART MUST BE CLEAN AND BURR FREE  
MFG TOLERANCES UNLESS OTHERWISE NOTED:  
ALL UNITS ARE INCHES  
(2) DECIMAL PLACES: ±.01  
(3) DECIMAL PLACES: ±.005  
ANGLES: ±.5°  
BREAK ALL EDGES .005/.015 X 45°  
MACHINED SURFACES TO BE 63 RMS  
CRITICAL CHARACTERISTIC - CONTROL  
PLAN REQUIRED



CONFIDENTIAL: THIS DRAWING OR ANY PART THEREOF IS PROPRIETARY AND MAY NOT BE REPRODUCED OR COPIED WITHOUT WRITTEN CONSENT OF AIRMAN PRODUCTS



Third Angle Projection

DRAWN BY	NR	DESCRIPTION
DRAWN DATE	2019-11-07	VALVE, .38 NPT, 5-2, SOL-PP, 12DC
DRAWING SIZE	B	
MATERIAL	SEE NOTES	PART NUMBER
SCALE	2:3	V380110114-DAL
SHEET #	1 OF 1	